

One

---

**METROPICA**  
RESIDENCES

DESIGN BY YOO



**IT'S ALL RIGHT HERE**



## 263 RESIDENCES ON 28 FLOORS

As you're ready to redefine life on your own terms, Metropica is redefining Sunrise, Florida, with a grand vision of a new downtown based on the luxury of convenience.

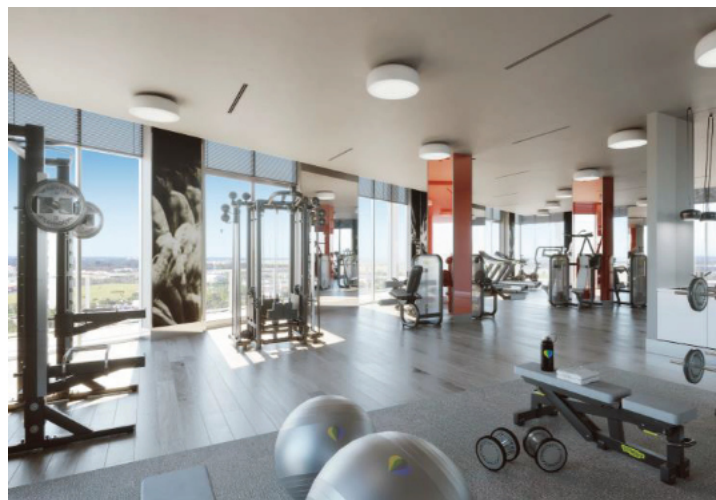
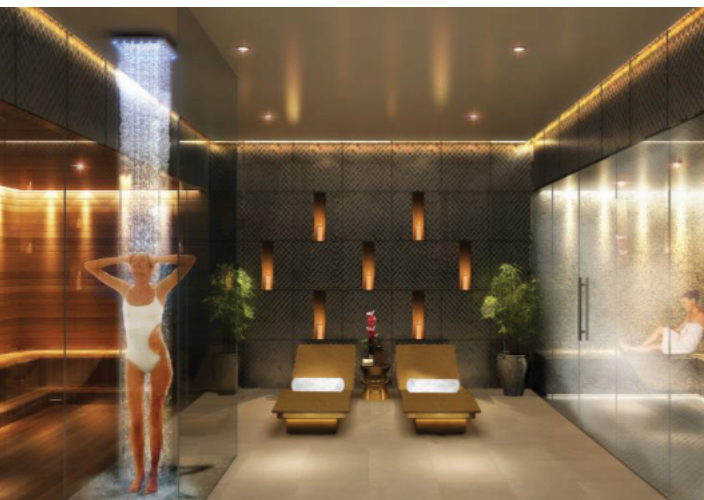
Envision yourself living in an upscale tower masterfully designed with unbelievable views, a full suite of amenities and a 24/7 concierge ready to accommodate your every need.

Discover a metropolitan oasis where you can float in an infinity pool, play tennis and walk your dog in pet-friendly parks.

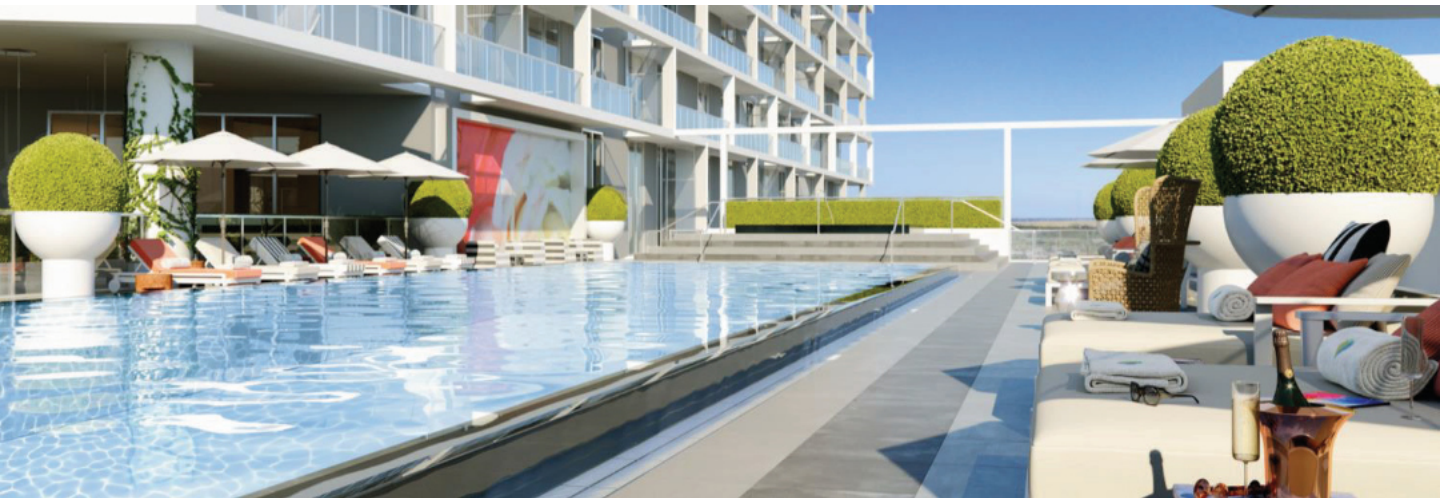


## RESORT-STYLE AMENITIES

- Infinity pool and outdoor jacuzzi
- Fully-equipped Technogym fitness center
- Indoor and outdoor massage therapy rooms and indoor steam room and sauna
- Two full-size tennis courts
- Outdoor area for yoga classes and outdoor cross-training facilities
- 24-hour concierge and security service
- Valet parking for guests
- Indoor clubroom with bar, lounge, catering kitchen and event/party space
- Children's playroom
- Indoor surround-sound movie theater
- Bike share and repair facility
- Reception butler
- Indoor pet grooming facilities
- Climate-controlled storage facilities (available as an upgrade)









## SOPHISTICATED INTERIORS

An internationally renowned team of architects and designers has elevated every aspect of Metropica to the highest level of quality, comfort and convenience for residents. One Metropica Residences feature interiors by YOO and architecture by Chad Oppenheim and are a celebration of tropical style for contemporary lifestyles. Landscaping by EDSA creates a lush paradise, surrounding and connecting every part of the community.

### **Metropica residents choose from two elegant finishes (Minimal or Nature) Each unit comes with:**

- Open floor plans with floor-to-ceiling impact glass windows and smooth-finish 9' or 10' ceilings in all living spaces
- Spacious terraces with glass railings directly accessible from living areas and wraparound terraces in all corner units
- Imported porcelain tile throughout
- Spacious walk-in closets in all master bedrooms
- Pre-wiring for high-speed communications
- Smart home technologies that integrate into unit amenities (available as an upgrade)
- Whirlpool stainless steel appliances, including counter-depth, French-door refrigerator, cooktop and oven, microwave and dishwasher
- Washer and dryer included
- Designer plumbing fixtures by Hansgrohe

OPPENHEIM  
ARCHITECTURE

yoo  
studio



**One Metropica Residences, Design by Yoo, will be move-in ready in late 2019.**

- 2-bedroom units from 961 ft<sup>2</sup> to 1,294 ft<sup>2</sup>
- 3-bedroom units at 1,384 ft<sup>2</sup>
- Double-height penthouses from 1,721 ft<sup>2</sup> to 2,022 ft<sup>2</sup>







## WHERE CONVENIENCE IS THE ULTIMATE LUXURY

*Why live on the congested coast when everything you want and need is at METROPICA for a more attractive price?*

The city of Sunrise is centrally located in Western Broward County, just a few minutes from South Florida's major highways, including I-75, I-95, I-595 and the Florida Turnpike.



It's less than 10 minutes from Weston and less than half an hour from the Fort Lauderdale International Airport, Hollywood beaches, Boca Raton and Aventura.





## WELCOME TO THE NEW DOWNTOWN LIVING

From upscale retailers to emerging brands, from the latest fashions to fitness studios, the shops and lifestyle services you want and need are just steps away at Metropica.

Explore trend-setting shops, dine at award-winning restaurants led by renowned chefs, unwind with a comedy headliner, attend a live music performance, meet your friends for handcrafted cocktails at our boutique hotel, catch the latest blockbuster at our state-of-the-art movie theatre or spend the evening playing at our upscale bowling alley. Everything is right here at one of our many premium entertainment venues.

Additionally, the BB&T Center, home to the Florida Panthers and a regular stop on the biggest concert tours, and the 2.4 million-square-foot Sawgrass Mills shopping center are both within walking distance.







## **CLASS A OFFICE SPACE**

Metropica's contemporary office buildings put corporate tenants in the center of Western Broward County's vibrant economy and gives them premier access to major transportation hubs that connect to countless domestic and international markets.

Office tenants contribute to the community's lively atmosphere, and Metropica residents who work in the office towers enjoy the convenience of being able to walk or bike to work.





*One*

---

**METROPICA**  
RESIDENCES  
DESIGN BY YOO



ORAL REPRESENTATIONS CANNOT BE RELIED UPON AS CORRECTLY STATING REPRESENTATIONS OF THE DEVELOPER. FOR CORRECT REPRESENTATIONS, MAKE REFERENCE TO THE DOCUMENTS REQUIRED BY SECTION 718.503, FLORIDA STATUTES, TO BE FURNISHED BY A DEVELOPER TO A BUYER OR LESSEE. This is not an offering, and an offering is only made by the prospectus for Metropica North Tower I, a Condominium (the "Condominium"), and no statements should be relied upon unless made in the prospectus. Please refer to the documents furnished by Metropica Residential I, LLC, a Delaware limited liability company (the "Developer") pursuant to state law for information regarding the Condominium. This is not intended to be an offer to sell, or solicitation to buy, a unit in the Condominium in any jurisdiction where prohibited by law. In no event shall any solicitation, offer or sale of a unit in the Condominium be made in, or to residents of, any state or country in which such activity would be unlawful. Broker participation is welcome. No real estate broker or salesperson is authorized to make any representations or other statements regarding the project, and no agreements with, deposits paid or other arrangements made with any real estate broker are or shall be binding on the Developer. The information contained herein, including, without limitation, any and all artist's or architectural conceptual renderings, plans, floor plans, specifications, features, dimensions and amenities depicted or otherwise described herein, are based upon current development plans, which are subject to change or abandonment without notice. No guarantees or representations whatsoever are made that any plans, floor plans, specifications, features, facilities, dimensions or amenities depicted by artist's or architectural renderings, or otherwise described herein, will be provided, or, if provided, will be the same type, size, quality, location, or nature as depicted or otherwise described herein. Prices subject to change without notice.