

THE RESIDENCES

SIX FISHER ISLAND



Purchaser's Guide

N 25° 45.8255  W 80° 8.4428

FISHER ISLAND, PERFECTED

Stretched out across 650 feet of pristine shoreline is Six Fisher Island Residences, a collection of only 50 waterfront homes, the last to be built on what was once the Vanderbilt family's private retreat. Six Fisher is the pinnacle of Fisher Island's soul, merging the grandeur and history of this storied tropical paradise with exacting contemporary design. Find serenity, privacy, and effortless living, both intimate and generous, in these remarkable homes on this exclusive island haven.



AN ISLAND WITHIN AN ISLAND

Six Fisher is a sanctuary where every detail immerses you in the tranquility and beauty of this unique island. Panoramic views of the water surround bright, open interiors, richly textured with natural stone and bespoke millwork in every room. The indoors blend with the sun, the sea, and the sky, connecting your home to an outdoor oasis.

SIX FISHER ISLAND

650 linear feet of pristine shoreline

An expansive 6.5 acre site

Less than 50 residences across 10 floors

More than 55,000 square feet of bespoke, five-star amenities exclusive to Six Fisher residents

Three- to eight-bedroom residences, ranging from 3,872 to over 15,000 square feet

Refined interiors by internationally renowned interior architecture studio Tara Bernerd & Partners

Private dock with houseboat

Three lobbies, each with a full-time concierge

Three dedicated parking spaces per residence—two for cars, one for provided golf cart

Lush landscape by Enea Garden Design

THE RESIDENCES

Private elevator with direct entry to each residence

Airy 10-foot ceilings with floor-to-ceiling windows, showcasing the Atlantic Ocean, Biscayne Bay, Miami Beach and the Miami skyline

Private 15-foot-deep terraces designed to provide direct views of the Atlantic Ocean and Biscayne Bay from every residence

Spacious living, dining, and entertaining area, accented with linear cove lighting

Tara Bernerd & Partners custom-designed kitchens, outfitted with Sub-Zero and Wolf appliance suites, including integrated dual fuel range, full-height wine storage, steam oven, ice maker, and coffee system

Bathrooms and closets designed by Tara Bernerd & Partners

Gracious primary suites feature bay views, midnight bar, and direct terrace access

Primary bathrooms feature stone flooring and walls, custom bathtubs, bespoke mirrors, and light fixtures

Two oversized, fully outfitted walk-in wardrobes in each primary bedroom

Private pools and outdoor kitchens in select residences, giving residents the luxury of true indoor-outdoor living

Custom flooring throughout



Waterfront Gallery Lounge



Kitchen

Living Room Lounge



THE GRANDEST HOME IMAGINABLE

Nestled within nearly 7 acres of landscaped gardens and waterfront are amenities designed by acclaimed interior architecture studio Tara Bernerd & Partners. This extensive offering of services inspires endless new ways to live and interact with your family, friends, and neighbors. The result is a lifestyle that allows you to move effortlessly between the natural world and the created, day and night, open places and discreet ones.

THE AMENITIES

Membership to the exclusive Fisher Island Club, a members-only community with beach club, restaurants, marina, full-service spa, golf course, racquet club, and more

Signature bayfront restaurant helmed by a celebrated chef

Private dining room, chef's table, and bespoke wine room, all available for exclusive use

In-residence dining and catering from signature on-site restaurant

Speakeasy-style cocktail bar

Two resort-style pools—one facing the sunrise, the other the sunset—with outdoor spa, sunbeds, and cabanas

Poolside food and beverage service

Amenity deck with padel ball court and imaginative children's playground

Two bright, open bayfront lounges

Sanctuary spa with sauna and treatment rooms, hot and cold plunge pools, and a world-class salon with personalized services

State-of-the-art fitness center with high-impact training, Pilates reformers, and a yoga studio, overlooking Biscayne Bay

Multisport simulator game room and teen lounge

Boardroom equipped with advanced technology, ideal for hosting executive meetings

Luxury guest suites for family and friends

Golf cart (included with residence) and bicycle storage

House car and house tender for seamless transportation on and off Fisher Island

Residential butler

Dedicated lifestyle concierge

24-hour security and valet service

On-site general manager

Home management services—from cleaning and maintenance to floral and pantry stocking—available for additional fees



FISHER ISLAND

There is no place like Fisher Island. From its inception, this exclusive place has been home to those who seek seclusion, while still moments away from the center of it all. At its heart is the private Fisher Island Club, where membership is included for you as a homeowner.





WELCOME TO THE CLUB

Located in and around the original Vanderbilt Mansion, the Club is the center of social life on Fisher Island. Stretching out along the shore, it is an extension of your home, a place to connect with fellow residents, entertain family and friends, and relax.

Beach Club

- Restaurant
- Sunset Bar
- Beach
- Vanderbilt Mansion
- Pool

The Links—Golf Course

- Deep-Water Marina and Luxury Yacht Harbor
- Snooker Club

Spa Internazionale

(includes salon and fitness center)

- Racquet Club
- Fisher Island Club Cottages
- Vanderbilt Theater
- Observatory
- Aviary
- The Cove Kids Club

Prime Dining Venues

- Garwood Lounge & Piano Bar
- Theapolis
- Porto Cervo
- Beach Club
- La Trattoria
- Greenside

ISLAND-WIDE AMENITIES

Fisher Island Day School

Rey's Dry Cleaners

UHealth Clinic

Regions Bank

Island Market

THE TEAM

Related Group DEVELOPER

Founded in 1979, Related Group has enhanced skylines with iconic development characterized by innovative design, enduring quality, and inclusive living. Through groundbreaking partnerships with world-renowned architects, designers, and artists, Related redefines urban environments on a global scale, fostering distinctive dynamic communities and symbolic landmarks that have become local sources of pride. Since its inception, the company has built, rehabilitated, and managed over 100,000 condominium, rental, and commercial units. The firm is one of the largest privately-owned businesses in the U.S., with a development portfolio in excess of \$40 billion in 40 years.

Tara Bernerd & Partners INTERIOR ARCHITECT

Tara Bernerd is the award-winning visionary behind some of the world's leading hotels, with clients including Four Seasons, Belmond, and Rosewood. Based in London's Belgravia, the internationally renowned designer is known for approachable luxury, a global sensibility, and interiors with a deep sense of place.

Kobi Karp Architecture and Interior Design DESIGN ARCHITECT

Founded in Miami in 1995, Kobi Karp is a full-service architectural and interior design firm of international renown. Kobi Karp, the firm's founding principal, is an award-winning member of the American Institute of Architects and the American Society of Interior Designers. Among the firm's builds include The Surf Club at Surfside, 1 Hotel South Beach, and Fisher Island's Palazzo del Sol.

BH Group CO-DEVELOPER

BH Group is a Miami-based real estate development firm focused on the ground-up development of luxury projects throughout South Florida. BH has extensive experience in the acquisition, construction, design, capital structuring, and asset management of complex developments. For the last 20 years, BH Group has been involved in many large-scale real estate transactions and developments by utilizing strong relationships to provide investors with opportunities not otherwise available in the real estate market.

Enea Garden Design LANDSCAPE ARCHITECT

Founded on the belief that everyone should be able to experience the beauty and value of nature daily, Enea has grown to become one of the leading landscape architecture firms in the world. The company's hallmark is its success at achieving architectural synergy between home and garden, where all details — materials, artwork, furniture, and plantings — complement and support one another.

Globe Invest CO-DEVELOPER

Globe Invest Limited is entrepreneur Teddy Sagi's single-home office, dedicated to facilitating the preservation and creation of wealth through oversight and support of existing and new investments. The family office consists of a team of expert advisors who manage the interests, wealth and legacy, and investments of the principal. Globe Invest also invests in various sectors including software developments and applications, technology companies, financial services, and real estate.

Douglas Elliman Development Marketing

Douglas Elliman Development Marketing combines unrivaled sales, leasing, and marketing expertise with an in-depth awareness, from the most intricate details to major trends. As a key member of a global network, Douglas Elliman Development Marketing delivers maximum value to clients through comprehensive planning, innovative marketing strategies, and superior sales and rental management.



THE COMPLETE OFFERING TERMS ARE IN A CPS-12 APPLICATION AVAILABLE FROM THE OFFEROR. FILE NO. CP23-0006

ORAL REPRESENTATIONS CANNOT BE RELIED UPON AS CORRECTLY STATING REPRESENTATIONS OF THE DEVELOPER. FOR CORRECT REPRESENTATIONS, MAKE REFERENCE TO THIS BROCHURE AND THE DOCUMENTS REQUIRED BY SECTION 718.503, FLORIDA STATUTES, TO BE FURNISHED BY A DEVELOPER TO A BUYER OR LESSEE.

☞ Six Fisher Island Condominium (the "Condominium") is marketed as The Residences at Six Fisher Island and is developed by PRH Parcel 7 Owner, LLC ("Developer"), which uses the marks of The Related Group, BH Group, and of Fisher Island under license agreements; however, neither The Related Group, BH Group, nor Fisher Island is the Developer. Tara Bernerd & Partners, Globe Invest, Douglas Elliman, and Kobi Karp provide contractual services to the Developer, and none are the Developer. All owners of a home in the Condominium approved to become lifetime members in the Fisher Island Club (the "Club") are granted at Developer's cost a lifetime Club membership upon the closing of the Condominium home purchase; however, the Club determines eligibility for membership and the Developer has no control over the Club's eligibility requirements. The Club membership cannot be redeemed for cash or other goods, services, or materials. The Club offers a nine-hole golf course, tennis facilities, spa, fitness center, dining, catering, event spaces, beach club, and marina; however, the Developer pays for the lifetime membership initiation fee only and does not pay annual dues or assessments of the Club, or any of the fees or charges for services, rental, dockage, slippage, food, beverages, spa services, gym services, catering, or any other costs or charges associated with a member's use of any of the Club's amenities or membership maintenance. The recreational, educational, dining, lodging, shopping, and medical facilities described are establishments on Fisher Island for the use and enjoyment of residents of Fisher Island at their own cost. The cost of use of such facilities is not included with purchase and not a part of the budget of the Condominium. The Condominium Association will own, operate, and manage a nonexclusive restaurant and an exclusive car and exclusive boat; however, the amenities owned and managed by the Association will only be available to Condominium homeowners for so long as the Association maintains the cost of owning, operating, and managing these services and amenities. Artist's conceptual renderings of exterior or site plan and depicting water, surrounding buildings, or landmarks are modified, and some surrounding buildings and landmarks are omitted. The completed Condominium, including common areas and amenities, are subject to change from what is illustrated and described. Images depicting the Condominium lifestyle are proposed only. The Condominium is developed on a site that is surrounded by water and transportation of persons and vehicles to and from Fisher Island is by a ferry service operated by the Fisher Island Transportation Department at an additional cost not paid by Developer. Although the Condominium site is waterfront on one side, no specific view depicted is guaranteed. The Developer is not incorporated in, located in, nor a resident of, New York. This is not intended to be an offer to sell, or solicitation of an offer to buy, a condominium unit to residents of New York or to residents of any other jurisdiction where prohibited by law. The floorplan designs, fixtures, furnishings, finishes, and décor depicted include fabrications, installations, and selections which may not be included with the purchase of a Unit. There may be finishes available to purchase at an additional cost as an upgrade to your Unit. Consult the Prospectus for the Developer for information regarding the Unit designs and to learn what is included with your Unit purchase and what upgrades may be available at additional cost. Sketches, renderings, or photographs depicting lifestyle, amenities, food services, resort services, finishes, designs, materials, furnishings, plans, specifications, or art contained in this brochure are proposed only, and the Developer reserves the right to modify, revise, or withdraw any or all in Developer's sole discretion without prior notice. Dimensions and square footage are approximate and may vary depending on how measured and based upon actual construction. Also, locations and layouts of windows, doors, closets, plumbing fixtures, structural features, and architectural design elements may vary from concept to actual construction. All depictions of appliances, plumbing fixtures, counters, countertops, cabinets, soffits, floor coverings and other matters of design and décor detail are conceptual and are not necessarily included in each Unit, and such drawings, images, and depictions shown should not be relied upon as representations, express or implied, of the final detail of the Condominium or any Unit. All improvements, designs, and construction are subject to first obtaining the appropriate federal, state, and local permits and approvals for same which may require the Developer to alter any design, floor plan, or layout depicted. The prospectus and marketing of the Developer is not an offering of securities. No statements or representations made by Developer, or any of its agents, employees, or representatives with respect to any potential for future profit, future appreciation in value, investment opportunity potential, rental income potential, or other benefits to be derived from ownership of a Unit should be relied upon in your decision to purchase a Unit. The Developer, and its respective agents, employees, and representatives are also not tax advisors and statement(s) that may be or may have been made with respect to tax benefits of ownership should not be relied upon in your decision to purchase a Unit. Nearby services and attractions both on and off Fisher Island, including but not limited to shopping venues, hotels, restaurants, ferry services, Club amenities, medical, educational, and recreational services referenced or identified in this publication are not controlled by Developer and may not be available for use upon completion of the Condominium. There is no guarantee that the any proposed Condominium amenities, artwork, designers, contributing artists, interior designers, fitness facilities, or restaurants will be available as depicted or at all upon, or following, the completion of the Condominium. The art depicted or described may be exchanged for comparable art at the sole discretion of the Developer. Art shown or described may be loaned to, rather than owned by, the Association; art installed at the time of completion of the Condominium may be removed prior to turnover to the Condominium Association and may or may not be replaced. No real estate broker or sales agent (whether engaged by Developer or not) is authorized to make any representations or other statements (verbal or written) regarding the Condominium and no deposits paid to, or other arrangements made with, any real estate broker or agents are binding on Developer. All prices are subject to change at any time and without notice, and do not include optional features, design packages, furniture packages, or premiums for upgraded Units. Consult the Prospectus of Developer to understand the amenities, proposed budget, terms, conditions, specifications, fees, Unit dimensions, site plans, and to learn what is included with purchase and by payment of regular assessments. The project graphics, renderings, photographs, and text provided herein are copyrighted works owned by the respective developer unless otherwise credited. 2022 © PRH Parcel 7 Owner, LLC, with all rights reserved.

THE RESIDENCES

SIX FISHER ISLAND

⑥

N 25° 45.8255



W 80° 8.4428



N 25° 45.8255



W 80° 8.4428



N 25° 45.8255



W 80° 8.4428

Residence Features

- Private elevator with direct entry to each residence
- Airy 10-foot ceilings with floor-to-ceiling windows, showcasing the Atlantic Ocean, Biscayne Bay, and the Miami skyline
- Private 15-foot-deep terraces designed to provide direct views of the Atlantic Ocean and Biscayne Bay from every residence
- Expansive living, dining, and entertaining area accented with linear cove lighting
- Custom kitchens outfitted with Sub-Zero and Wolf appliances
- Bathrooms and closets designed by Tara Bernerd & Partners furnished by Falma Italia
- Primary bathrooms featuring natural stone flooring and walls, custom bathtubs, bespoke mirrors and light fixtures
- His and Hers walk-in wardrobes in each bedroom, offering space and ease of access
- Private pools and outdoor kitchens in select residences, giving residents the luxury of true indoor-outdoor living

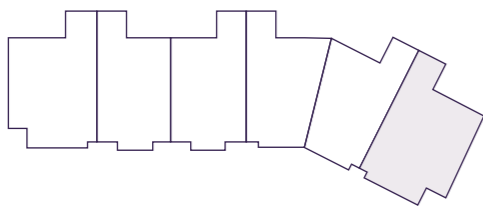
UNIT 01

INTERIOR
4,980 SF

*

5 BEDROOMS
6.5 BATHROOMS
SERVICE ROOM

OCEAN VIEW



PRIMARY BEDROOM
20'-1" x 20'-1"

BALCONY
16'-6" x 48'-1"

HER CLOSET
14'-1" x 12'-11"

HER BATHROOM
17'-2" x 13'-11"

LIVING ROOM
32'-3" x 29'-6"

HIS CLOSET
8'-10" x 12'-11"

HIS BATHROOM
12'-3" x 13'-11"

KITCHEN
13'-5" x 22'-2"

BEDROOM 2
17'-6" x 13'-1"

BEDROOM 5
12'-7" x 13'-6"

BEDROOM 4
12'-6" x 14'-6"

BEDROOM 3
12'-6" x 14'-6"



N 25° 45.8255

*

W 80° 8.4428

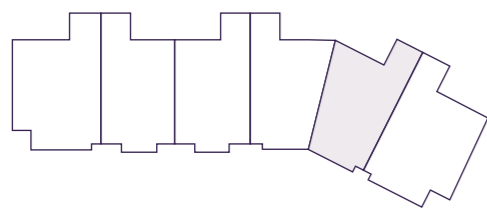
UNIT 02

INTERIOR
3,976 SF

*

3 BEDROOMS
4.5 BATHROOMS
SERVICE ROOM

OCEAN VIEW



- FAMILY ROOM
18'-8" x 20'
BALCONY
16'-6" x 43'-3"
- PRIMARY BEDROOM
14'-1" x 23'-6"
- KITCHEN
21'-6" x 11'-6"
- LIVING ROOM
30'-7" x 14'-6"
- HER CLOSET
9' x 13'-8"
- HIS CLOSET
9'-11" x 13'-4"
- PRIMARY BATHROOM
15'-4" x 17'-3"
- BEDROOM 2
13'-6" x 14'-5"
- BEDROOM 3
13' x 14'-8"



N 25° 45.8255

*

W 80° 8.4428

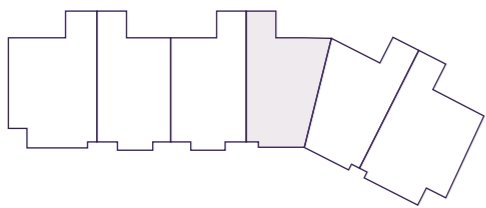
UNIT 03

INTERIOR
4,428 SF

*

4 BEDROOMS
5.5 BATHROOMS
SERVICE ROOM

OCEAN VIEW



BALCONY
15'-4" x 43'-3"

FAMILY ROOM
16'-10" x 20'-1"

PRIMARY BEDROOM
15'-2" x 22'-10"
KITCHEN
21'-1" x 11'-6"

LIVING ROOM
29'-5" x 15'-4"

HER CLOSET
14'-6" x 9'

HIS CLOSET
12'-5" x 9'-10"

PRIMARY BATHROOM
15'-4" x 17'-3"

BEDROOM 2
13' x 14'-5"

BEDROOM 3
12' x 13'-10"

BEDROOM 4
17'-9" x 15'-9"



N 25° 45.8255



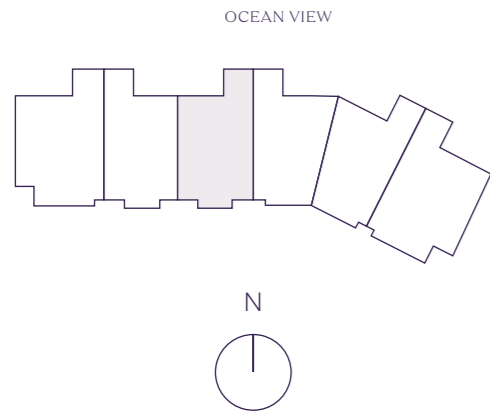
W 80° 8.4428

UNIT 04

INTERIOR
3,872 SF

*

3 BEDROOMS
4.5 BATHROOMS
DEN
SERVICE ROOM



FAMILY ROOM
16'-9" x 20'-1"
BALCONY
15' x 33'-7"

PRIMARY BEDROOM
14'-7" x 19"

KITCHEN
21'-1" x 12'-5"

LIVING ROOM
29'-5" x 15'-2"

HER CLOSET
10'-5" x 8'-2"

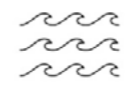
HIS CLOSET
10'-5" x 6'

PRIMARY BATHROOM
14'-7" x 19"

BEDROOM 2
14'-8" x 12'-10"

BEDROOM 3
16'-9" x 13'

DEN
11'-7" x 11'-3"



N 25° 45.8255



W 80° 8.4428

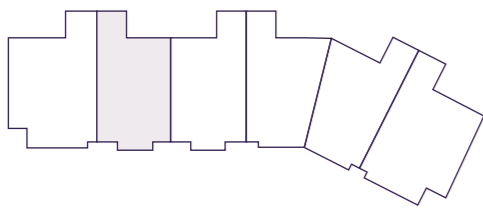
UNIT 05

INTERIOR
3,872 SF

*

3 BEDROOMS
4.5 BATHROOMS
DEN
SERVICE ROOM

OCEAN VIEW



FAMILY ROOM
16'-9" x 20'-1"
BALCONY
15' x 33'-7"

PRIMARY BEDROOM
14'-7" x 19"

KITCHEN
21'-1" x 12'-5"
LIVING ROOM
29'-5" x 15'-2"

HER CLOSET
10'-5" x 8'-2"
HIS CLOSET
10'-5" x 6'

PRIMARY BATHROOM
14'-7" x 19"

BEDROOM 2
14'-8" x 12'-10"

BEDROOM 3
16'-9" x 13'

DEN
11'-7" x 11'-3"



N 25° 45.8255



W 80° 8.4428

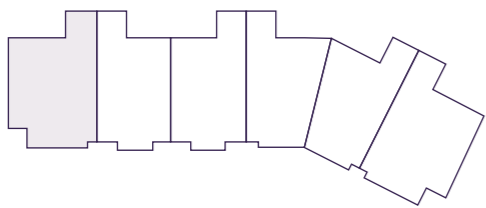
UNIT 06

INTERIOR
5,058 SF

*

4 BEDROOMS
5.5 BATHROOMS
WINDOWED SERVICE ROOM
FAMILY ROOM

OCEAN VIEW



BALCONY
15'-3" x 69'-5"

PRIMARY BEDROOM
20'-3" x 17'-7"

HER BATHROOM
17'-1" x 13'-3"

LIVING ROOM
29'-2" x 30'-6"

HIS BATHROOM
12'-1" x 13'-3"

HER CLOSET
14'-1" x 12'-5"

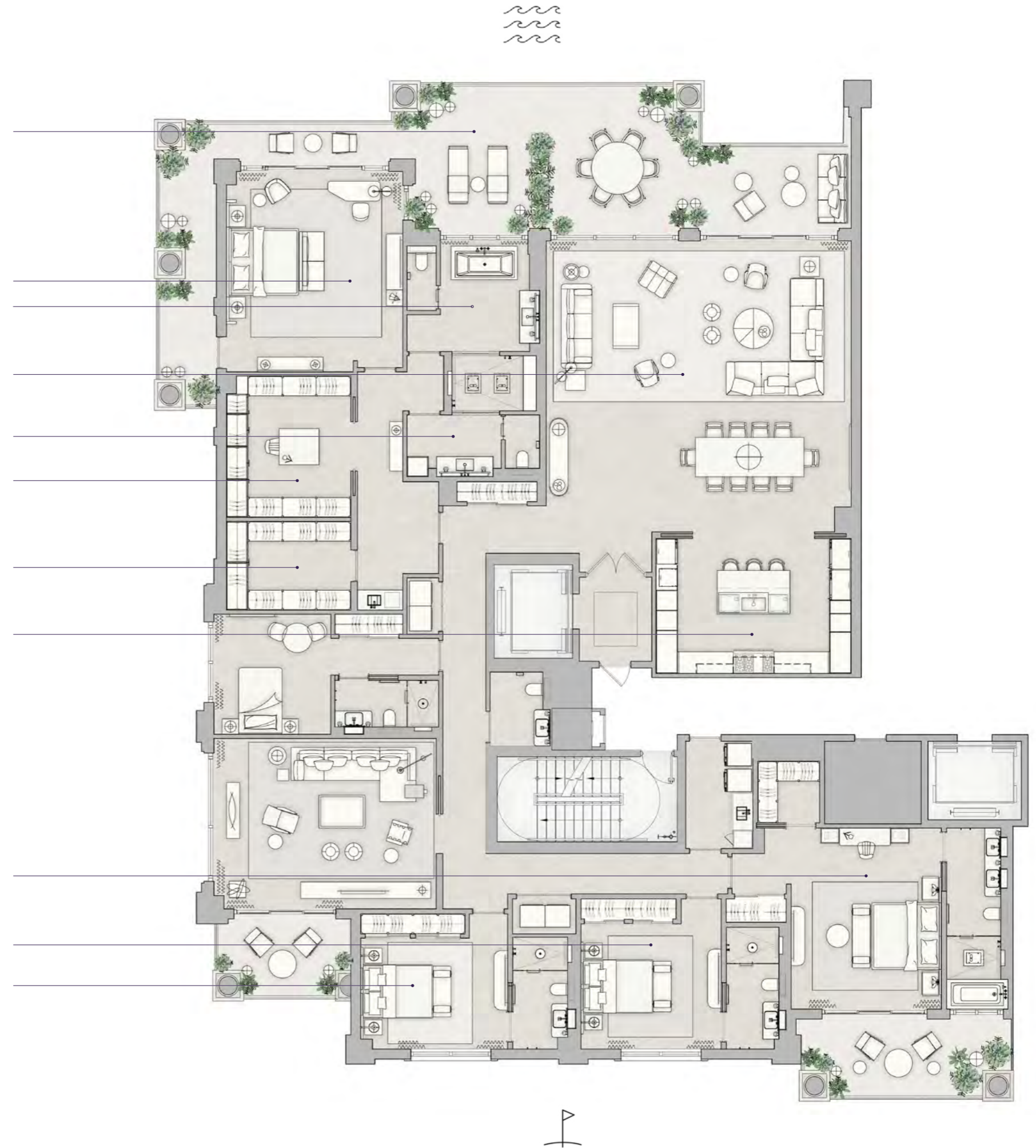
HIS CLOSET
8'-10" x 12'-5"

KITCHEN
13'-6" x 19'-6"

BEDROOM 2
18'-3" x 15'

BEDROOM 3
12'-6" x 14'

BEDROOM 4
11'-1" x 14'-8"



N 25° 45.8255

*

W 80° 8.4428

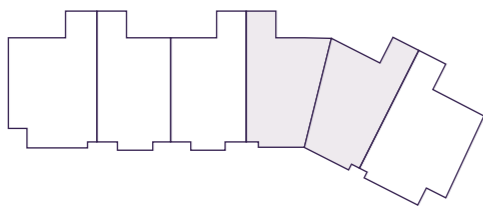
UNIT 02C

INTERIOR
8,404 SF

*

6 BEDROOMS
7.5 BATHROOMS
FAMILY ROOM
STUDY
WINE ROOM
EXERCISE ROOM
SERVICE ROOM

OCEAN VIEW



PRIMARY BEDROOM
23'-1" x 20'-1"

BALCONY
15'-9" x 88'-10"

HER BATHROOM
17'-7" x 14'-11"

FAMILY ROOM
25'-11" x 20'-1"

LIVING ROOM
29'-5" x 64'-5"

HIS BATHROOM
12'-3" x 14'-9"

HIS WARDROBE
14'-10" x 18'-6"

HER WARDROBE
17'-5" x 14'-4"

KITCHEN
16'-2" x 22'

WINE ROOM
5'-3" x 15'-11"

STUDY
15'-7" x 10'-3"

EXERCISE ROOM
10'-11" x 28'-11"

BEDROOM 2
13'-6" x 14'-5"

BEDROOM 3
14'-6" x 14'-8"

BEDROOM 4
13' x 14'-5"

BEDROOM 5
12' x 13'-10"

BEDROOM 6
17'-9" x 15'-8"



N 25° 45.8255

*

W 80° 8.4428

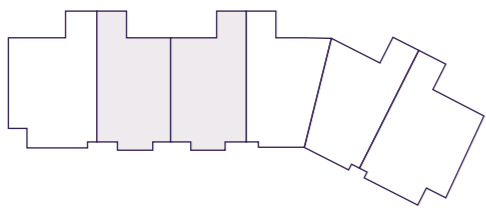
UNIT 04C

INTERIOR
7,744 SF

*

5 BEDROOMS
6.5 BATHROOMS
FAMILY ROOM
STUDY
DEN
WINE ROOM
EXERCISE ROOM
SERVICE ROOM

OCEAN VIEW



PRIMARY BEDROOM
23'-1" x 19'-4"

BALCONY
15' x 67'-11"

FAMILY ROOM
22'-8" x 19'

HER BATHROOM
18'-5" x 15'-1"

LIVING ROOM
29'-7" x 50'-7"

KITCHEN
12'-10" x 17'-8"

HER CLOSET
17'-5" x 14'-4"

HIS BATHROOM
12'-6" x 14'-9"

HIS CLOSET
14'-10" x 19'-8"

WINE ROOM
6'-3" x 14'-5"

EXERCISE ROOM
12'-3" x 26'-8"

BEDROOM 5
16'-9" x 13'

BEDROOM 4
14'-8" x 12'-10"

DEN
11'-9" x 11'-3"

BEDROOM 3
14'-8" x 12'-10"

BEDROOM 2
16'-1" x 13'-8"

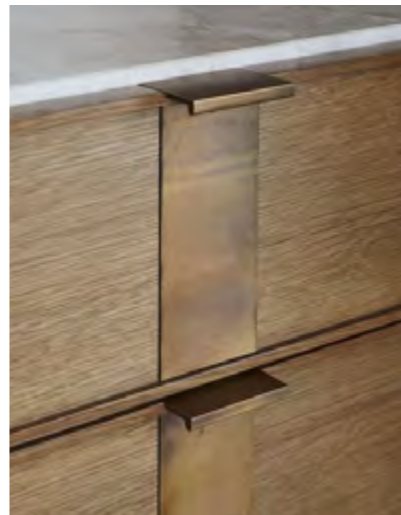


N 25° 45.8255

*

W 80° 8.4428

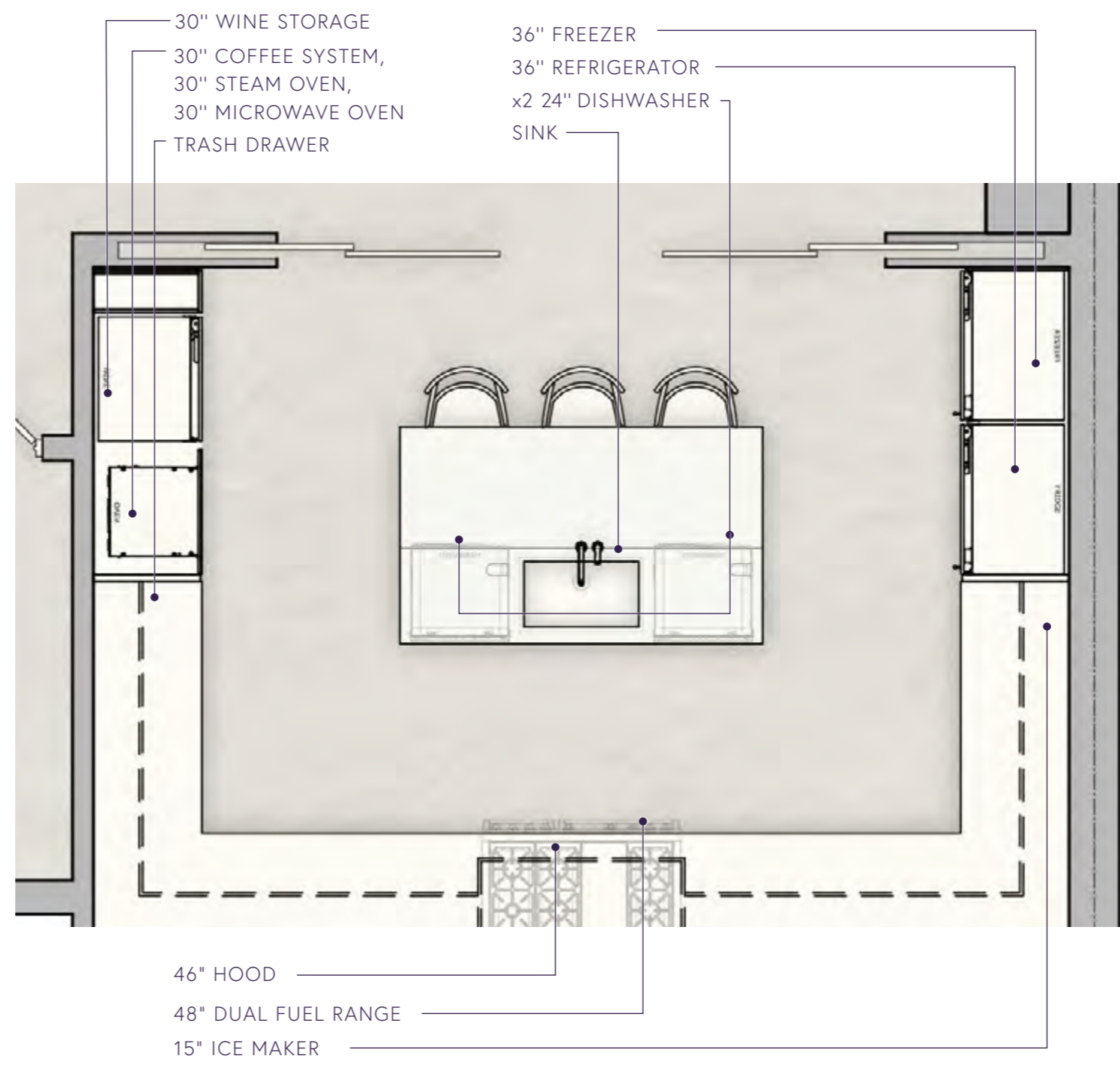
RESIDENCES



KITCHEN MOOD

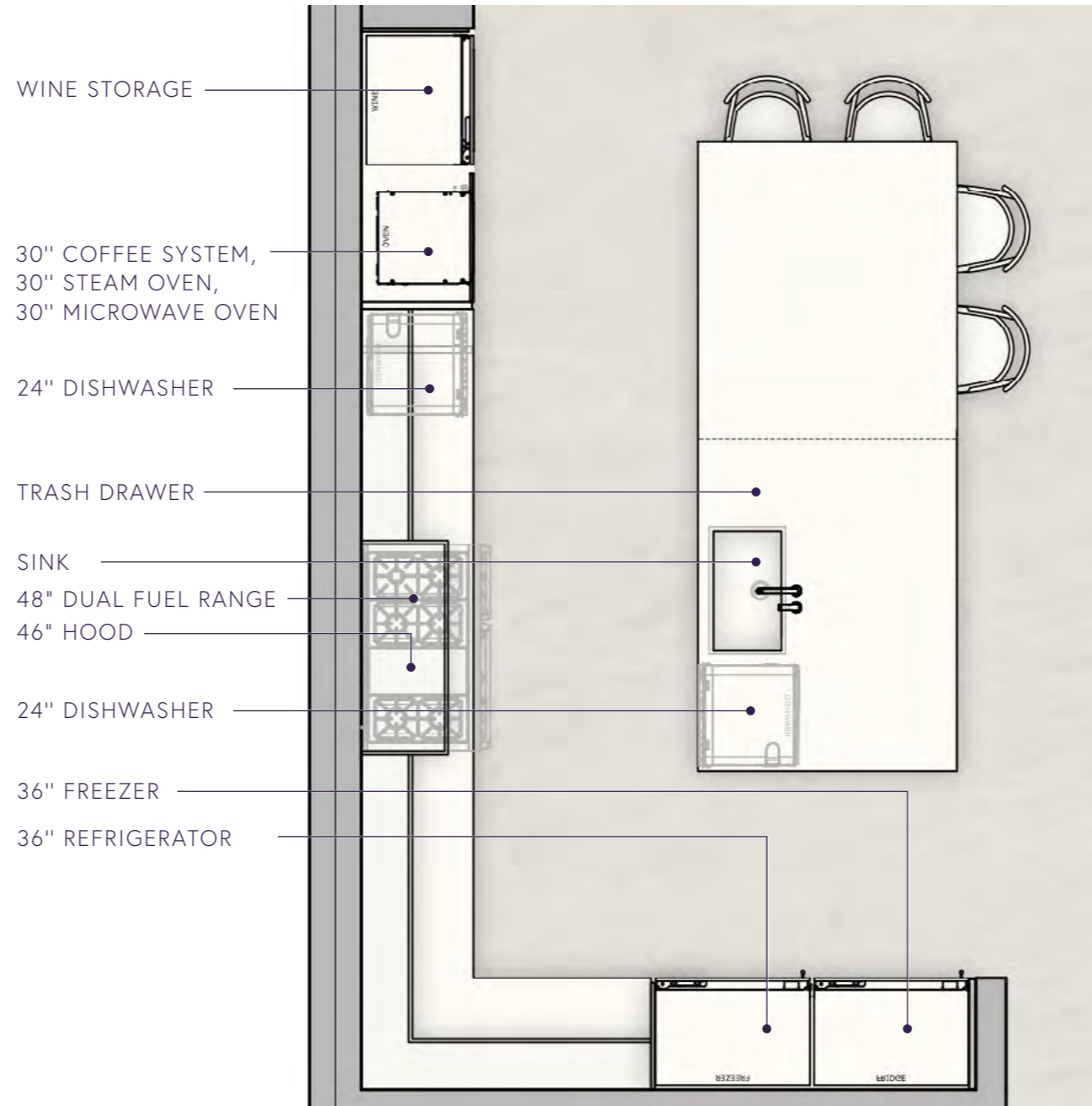
Kitchen Layout

EQUIPMENT LIST	QTY
48" DUAL FUEL RANGE	1
46" HOOD	1
36" REFRIGERATOR	1
36" FREEZER	1
15" ICE MAKER	1
30" COFFEE SYSTEM	1
30" STEAM OVEN	1
30" MICROWAVE OVEN	1
30" INTEGRATED WINE STORE	1
SINK	1
24" DISHWASHER	2

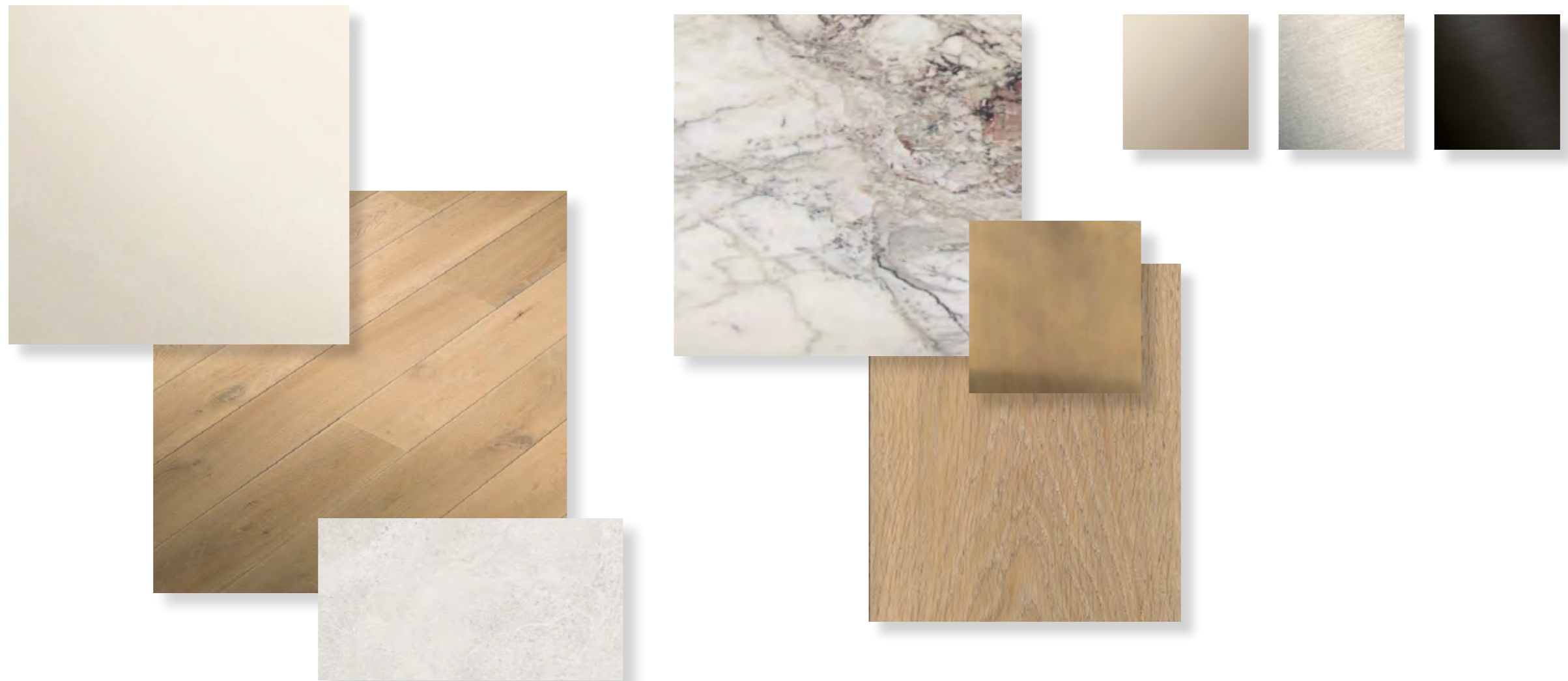


Kitchen Layout

EQUIPMENT LIST	QTY
48" DUAL FUEL RANGE	1
46" HOOD	1
36" REFRIGERATOR	1
36" FREEZER	1
15" ICE MAKER	1
30" COFFEE SYSTEM	1
30" STEAM OVEN	1
30" MICROWAVE OVEN	1
30" INTEGRATED WINE STORE	1
SINK	1
24" DISHWASHER	2



Kitchen Finishes



MATERIAL SCHEME

01. WALL AND CEILING PAINT | 02. TIMBER FLOORING | 03. SKIRTING LIMESTONE
04. COUNTERTOP AND ISLAND STONE | 05. DETAILS METAL FINISH | 06. JOINERY TIMBER
07. SANITARYWARE FINISH OPTIONS



Kitchen Equipment & Fittings



MILLWORK DETAIL CONCEPT



SUBZERO-WOLF
15" Ice Maker



SUBZERO-COVE
24" Cove Dishwasher
with Water Softener



SUBZERO-WOLF
36" Designer Column
Freezer with Ice Maker



SUBZERO-WOLF
36" Designer Column
Refrigerator with
Internal Dispenser



SUBZERO-WOLF
30" Designer Wine
Storage



SUBZERO-WOLF
48" Dual Fuel Range - 6 Burners
and Infrared Griddle



SUBZERO-WOLF
30" M Series Contemporary
Coffee System



SUBZERO-WOLF
30" M Series Contemporary
Black Glass Convection
Steam Oven



SUBZERO-WOLF
30" M Series Contemporary
Drop-down Door Microwave
Oven



SUBZERO-WOLF
46" Pro Hood Liner

Kitchen Equipment & Fittings



DORNBRACHT
Tara Classic Hot & Cold
Water Dispenser



DORNBRACHT
Tara Ultra Single Lever
Mixer with Pull-down Spray



DORNBRACHT
Pot Filler



DORNBRACHT
Kitchen Sink in Glazed Steel



JOSEPH GILES
Cabinet Pull



ARTICOLO
Tubi Pendant



JOSEPH GILES
Concealed Equipment Joinery Pull

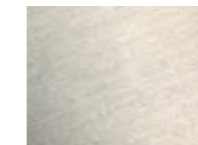


JOSEPH GILES
Drawer Pull

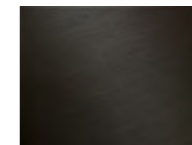
FINISHES



DORNBRACHT
Champagne 22K

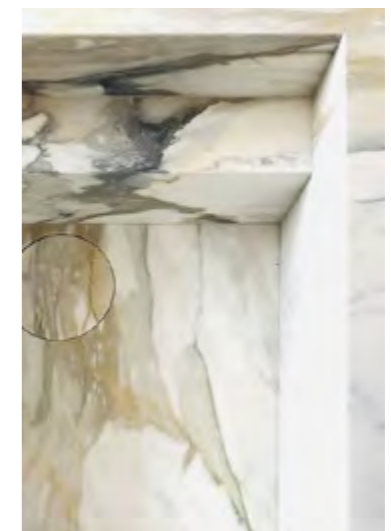
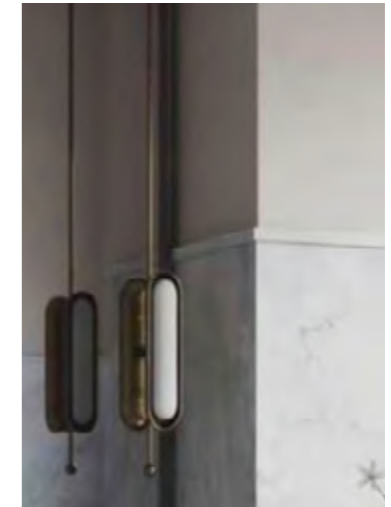
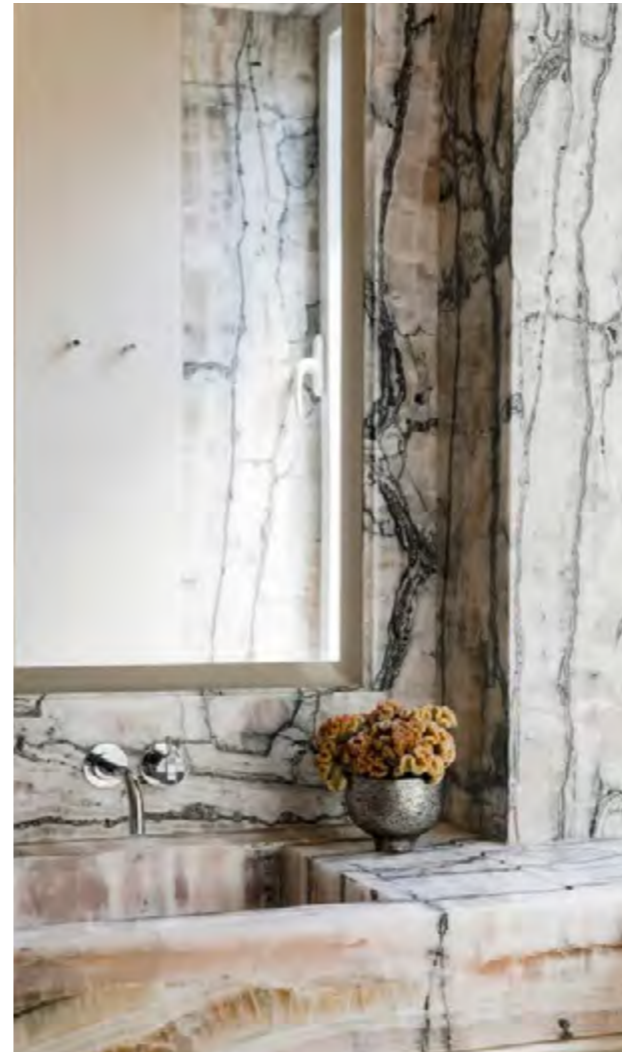
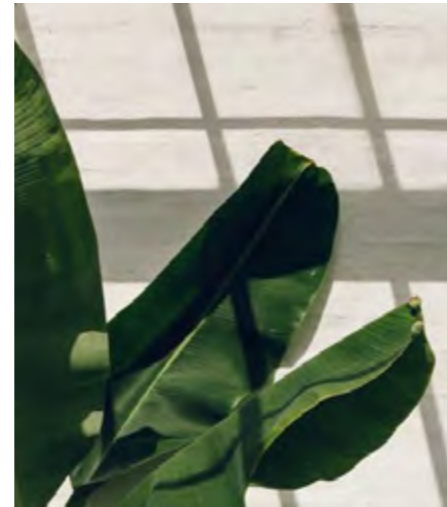


DORNBRACHT
Platinum Matte



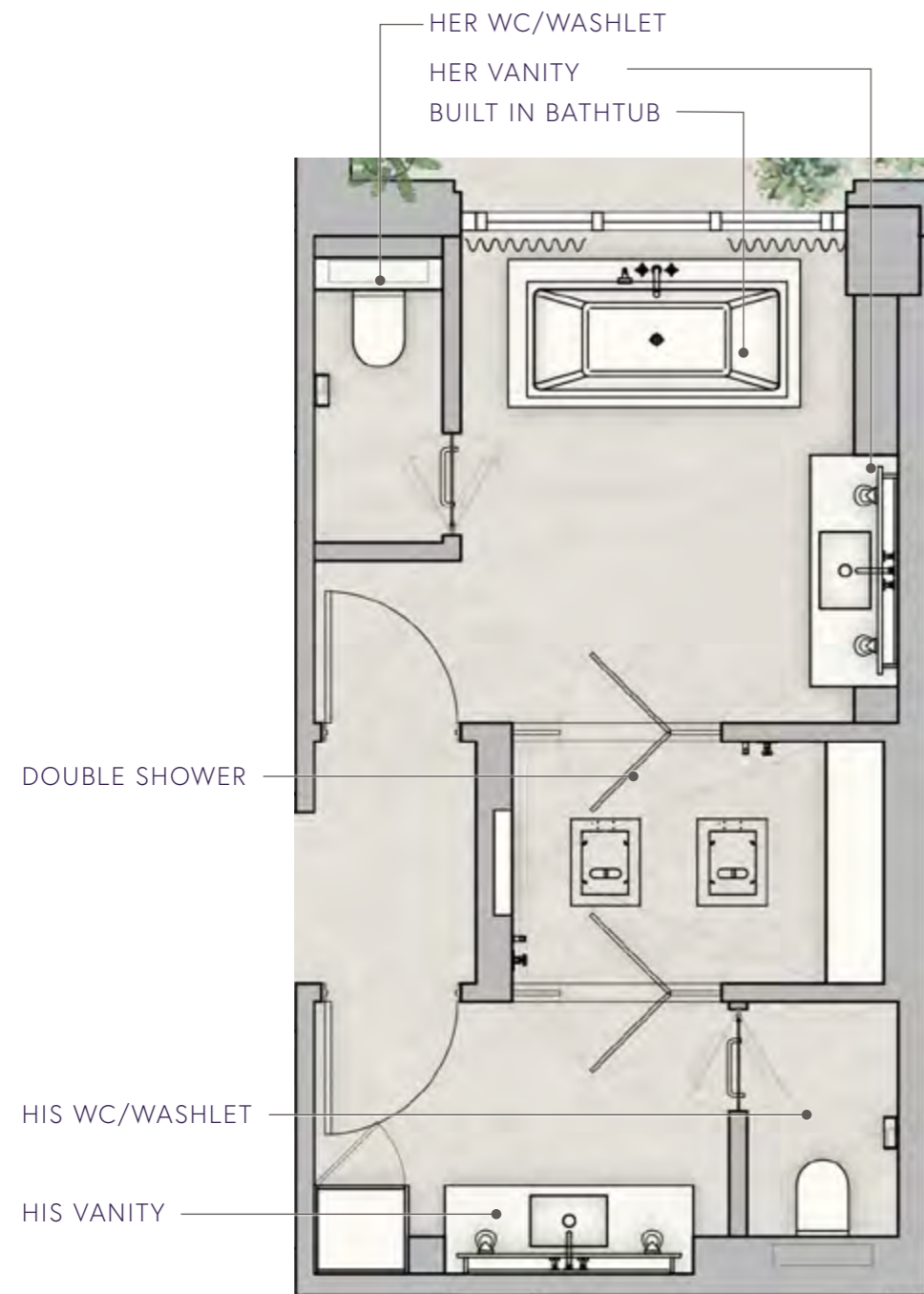
DORNBRACHT
Dark Platinum Matte

RESIDENCES



MASTER BATHROOM MOOD

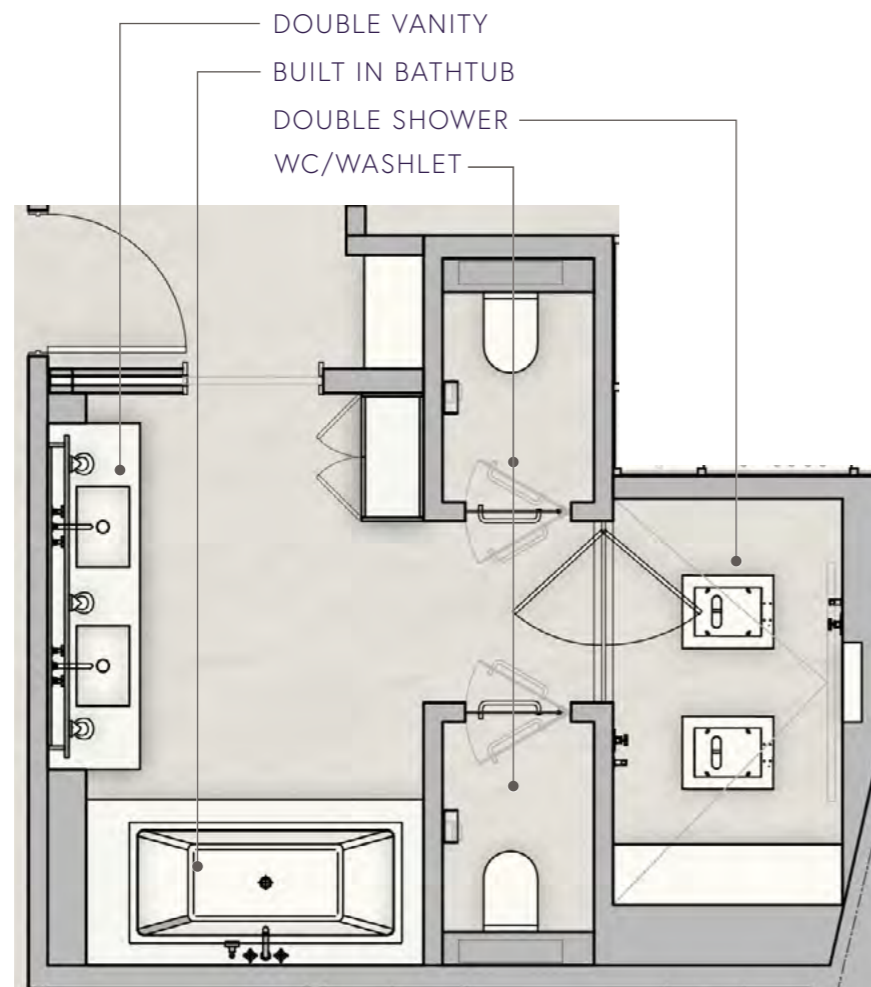
Master Bathroom Layout & Finishes



MATERIAL SCHEME

01. WALL AND CEILING PAINT | 02. STONE AT FLOOR, WALLS AND VANITY | 03. TIMBER AT VANITY
04. MIRROR | 05. SANITARYWARE FINISH OPTIONS | 06. SATIN OPAL GLASS AT WC DOOR

Master Bathroom Layout & Finishes

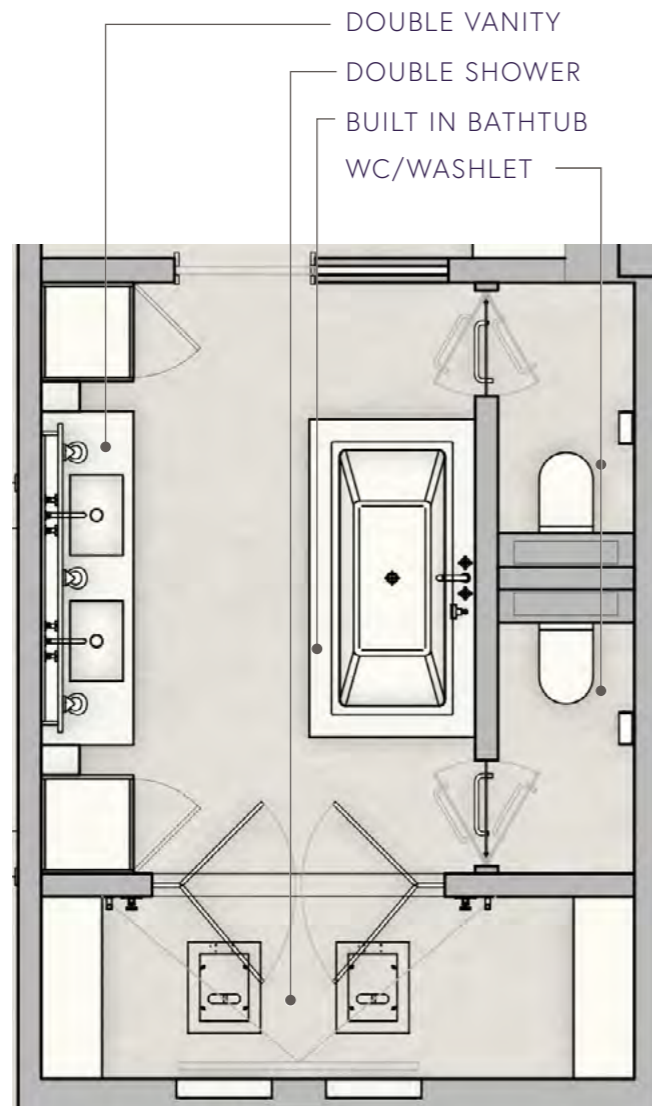


MATERIAL SCHEME

01. WALL AND CEILING PAINT | 02. STONE AT FLOOR, WALLS AND VANITY | 03. TIMBER AT VANITY
 04. MIRROR | 05. SANITARYWARE FINISH OPTIONS | 06. SATIN OPAL GLASS AT WC DOOR



Master Bathroom Layout & Finishes



MATERIAL SCHEME

01. WALL AND CEILING PAINT | 02. STONE AT FLOOR, WALLS AND VANITY | 03. TIMBER AT VANITY
04. MIRROR | 05. SANITARYWARE FINISH OPTIONS | 06. SATIN OPAL GLASS AT WC DOOR

Master Bathroom—Sanitaryware Selections

DORNBRACHT - TARA



DORNBRACHT
Tara Deck Mounted Faucet



DORNBRACHT
Rain Panel



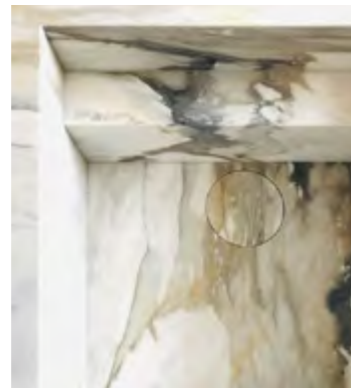
DORNBRACHT
Tara Robe Hooks



DORNBRACHT
Tara Deck Mounted Bath
Faucet



Steam Shower with
Water jets



CUSTOM
Marble Sink



DORNBRACHT
Hand Shower Set



DORNBRACHT
Thermostat Module



TOTO
Neorest AC Washlet Toilet



DURAVIT
Vero Air Bathtub



ENTRELACS
Hublot Wall Sconce



SALVATORI
Magnifying Mirror



DORNBRACHT
Tara Towel Bar



DORNBRACHT
Toilet Brush

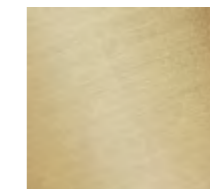


DORNBRACHT
Tara Toilet Roll Holder

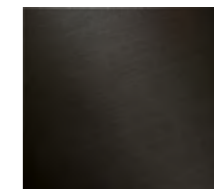
FINISHES



Platinum
Matte

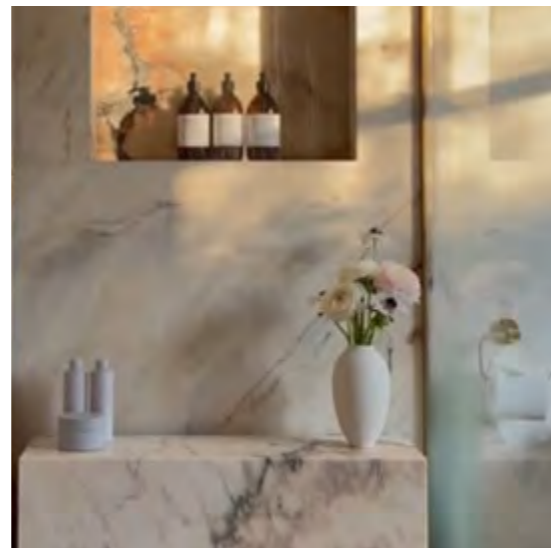


Brushed
Durabrass



Dark Brushed
Durabrass

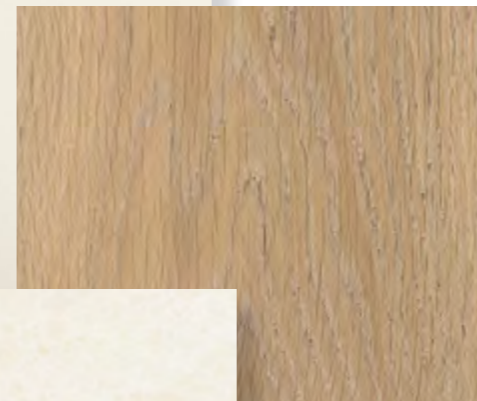
Secondary Bathroom Mood & Palette



01.

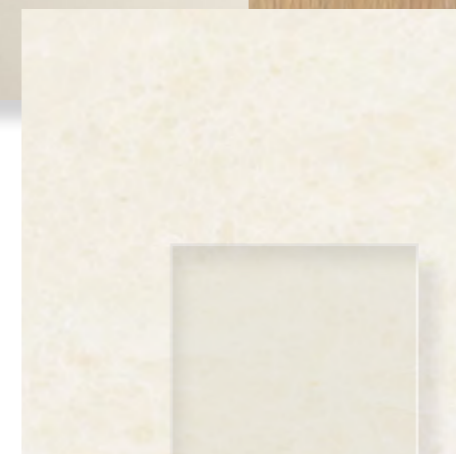


03.

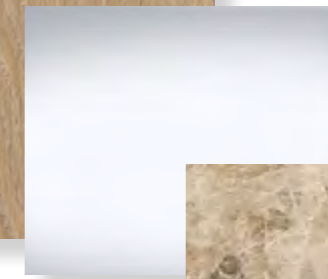


04.

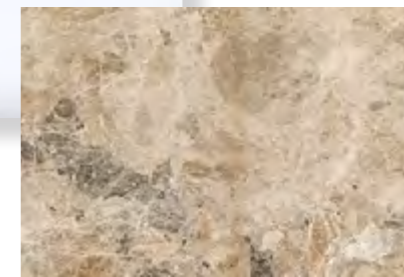
ARTICOLO
Slim End to End
Wall Sconce



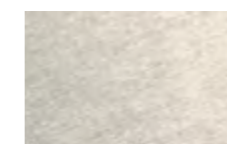
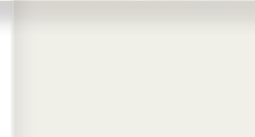
02.



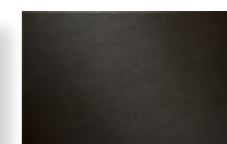
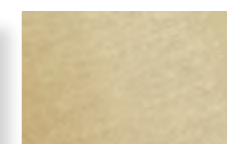
05.



07.



06.



MATERIAL SCHEME

01. CEILING PAINT | 02. STONE AT FLOOR AND WALLS | 03. TIMBER AT VANITY | 04. MIRROR | 05.
STONE AT VANITY | 06. SANITARYWARE FINISH OPTIONS | 07. SATIN OPAL GLASS AT WC DOOR



Secondary Bathroom - Sanitaryware Selections

DORNBRACHT - TARA



DORNBRACHT
Rain Shower 300mm dia



DORNBRACHT
Tara Wall Mounted Faucet



DURAVIT
DuraStyle Toilet Wall Mounted,
Rimless



DORNBRACHT
Thermostat Module



DORNBRACHT
Hand Shower Set



DURAVIT
Undermount Sink with Overflow



DORNBRACHT
Tara Toilet Roll Holder



DORNBRACHT
Toilet Brush

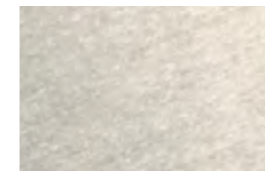


DORNBRACHT
Tara Robe Hook

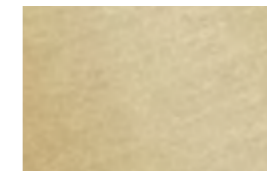


DORNBRACHT
Tara Towel Bar

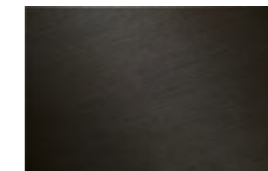
FINISHES



Platinum Matte



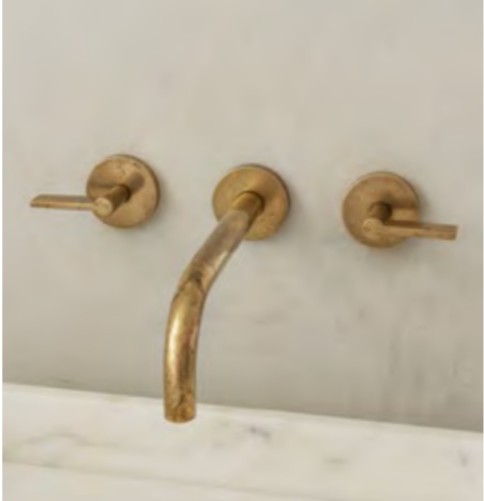
Brushed Durabronze



Dark Brushed
Durabronze



Powder Room Mood & Palette



ALLIED MAKER
Alabaster Mini Orb Wall Sconce



05.

MATERIAL SCHEME

01. WALLS AND CEILING PAINT | 02. STONE FLOOR | 03. STONE VANITY
04.MIRROR | 05.SANITARYWARE FINISH OPTIONS



Powder Room - Sanitaryware Selections

DORNBRACHT - TARA



DORNBRACHT
Tara Wall Mounted Faucet



GROHE
Flushplate

DURAVIT
DuraStyle Toilet Wall
Mounted, Rimless



DORNBRACHT
Tara Robe Hook



DURAVIT
Undermount Sink with Overflow



DORNBRACHT
Tara Toilet Roll Holder

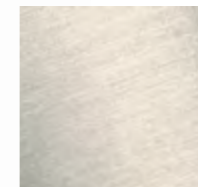


DORNBRACHT
Toilet Brush



DORNBRACHT
Tara Towel Bar

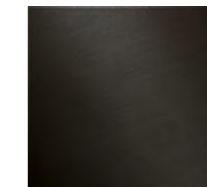
FINISHES



Platinum
Matte



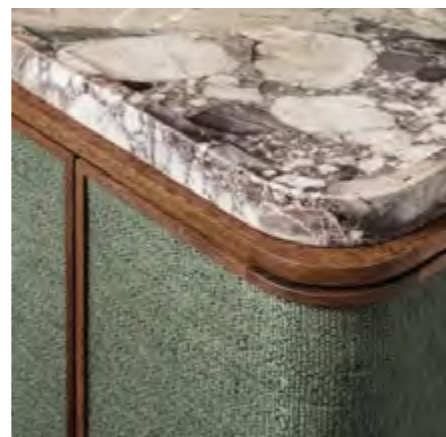
Brushed
Durabronze



Dark Brushed
Durabronze



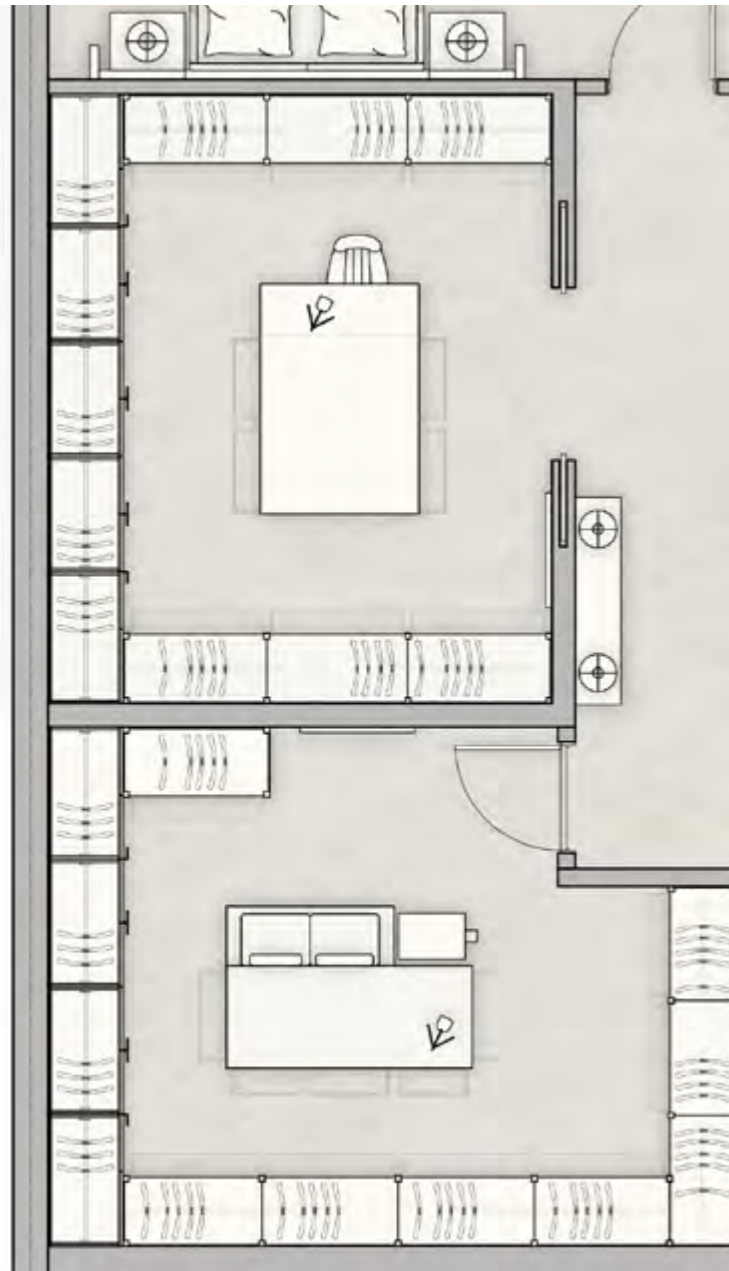
RESIDENCES



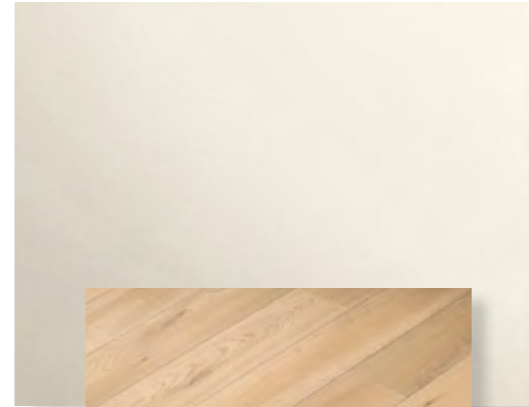
WARDROBE MOOD



Master Wardrobe Layout, Finishes & Hardware Selection



01.



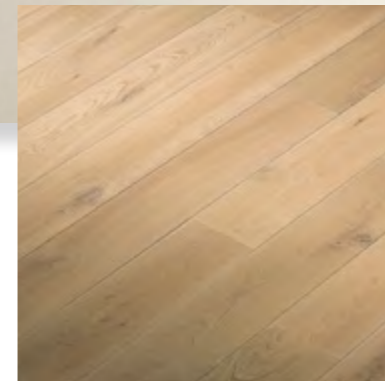
03.



07.



04.

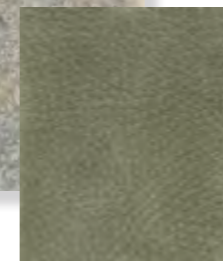


02.

05.



06.



HANDLE DESIGN

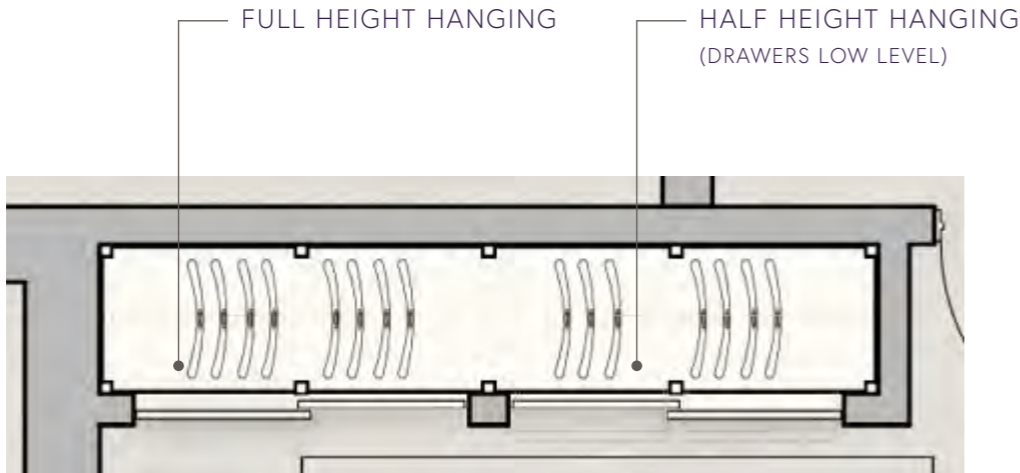


MATERIAL SCHEME

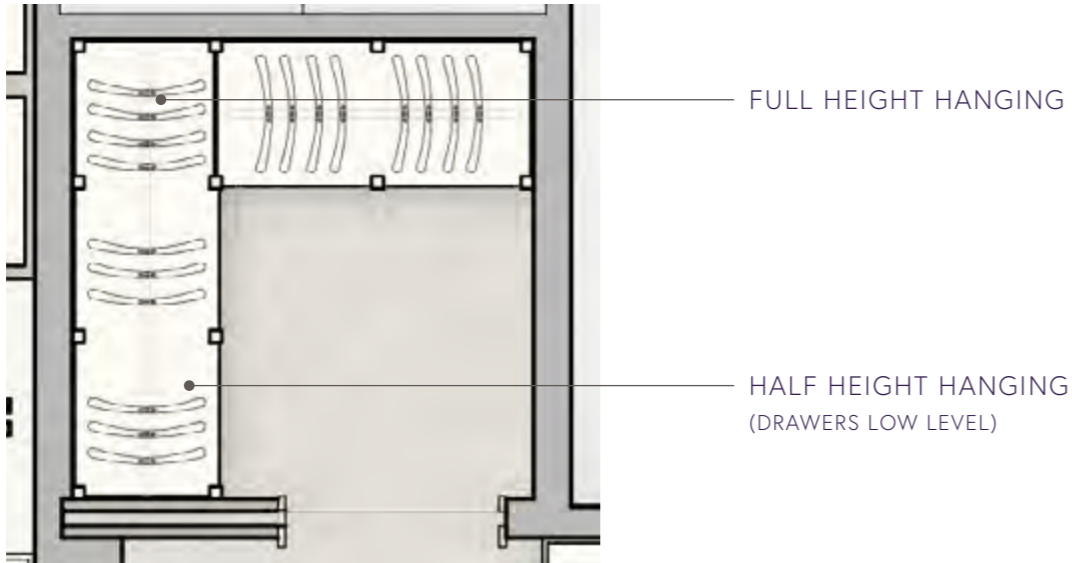
01. PAINT AT WALLS | 02. TIMBER FLOORING | 03. TIMBER JOINERY | 04. TINTED GLASS
05. STONE ISLAND TOP | 06. LEATHER DETAILING | 07. FABRIC PANELLING



Secondary Wardrobe Layouts & Mood



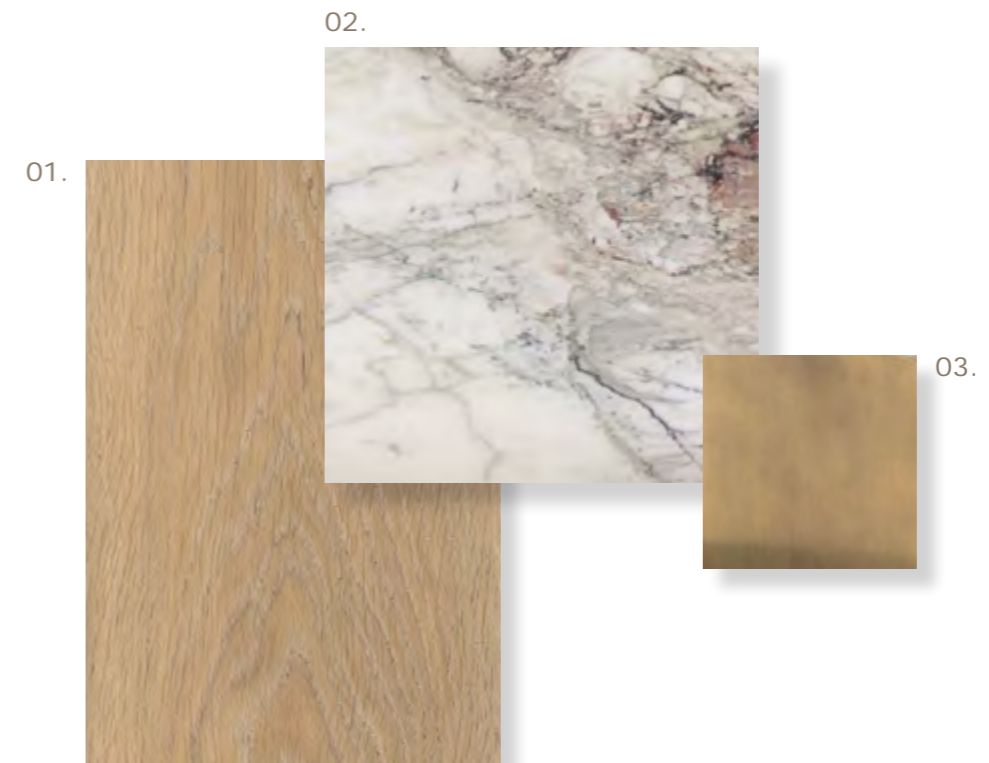
TYPE 1 - ENCLOSED WARDROBE



TYPE 2 - WALK-IN WARDROBE



Midnight Bar - Mood & Finishes



MATERIAL SCHEME

01. TIMBER JOINERY | 02. STONE COUNTER & DETAILS | 03. METAL DETAILING



Overall Palettes

01.



02.



03.



06.



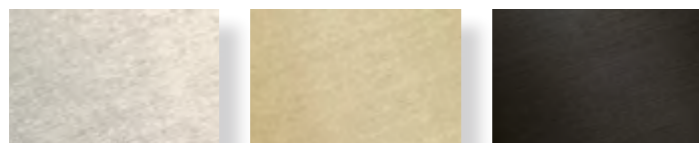
05.



04.



07.



MATERIAL SCHEME

01. GENERAL FINISHES | 02. KITCHEN FINISHES | 03. MASTER BATHROOM FINISHES | 04. MASTER WARDROBE FINISHES
05. SECONDARY BATHROOMS FINISHES | 06. POWDER ROOM FINISHES | 07. SANITARYWARE FINISH OPTIONS

Ironmongery Selections

JOSEPH GILES

DOOR HARDWARE



Door Lever - Mixed Metal



Door Lever



Door Pull Handle



Door Pull Handle



Privacy Turn

CABINETS HARDWARE



Decorative Solid Brass Cabinet Pull



Solid Brass Cabinet Pull



Metal & Glass Cabinet Pull



Solid Brass Cabinet Pull

FINISHES



Mid Antique Brass - Waxed



Brushed Nickel - Waxed

THE RESIDENCES

SIX FISHER ISLAND

6